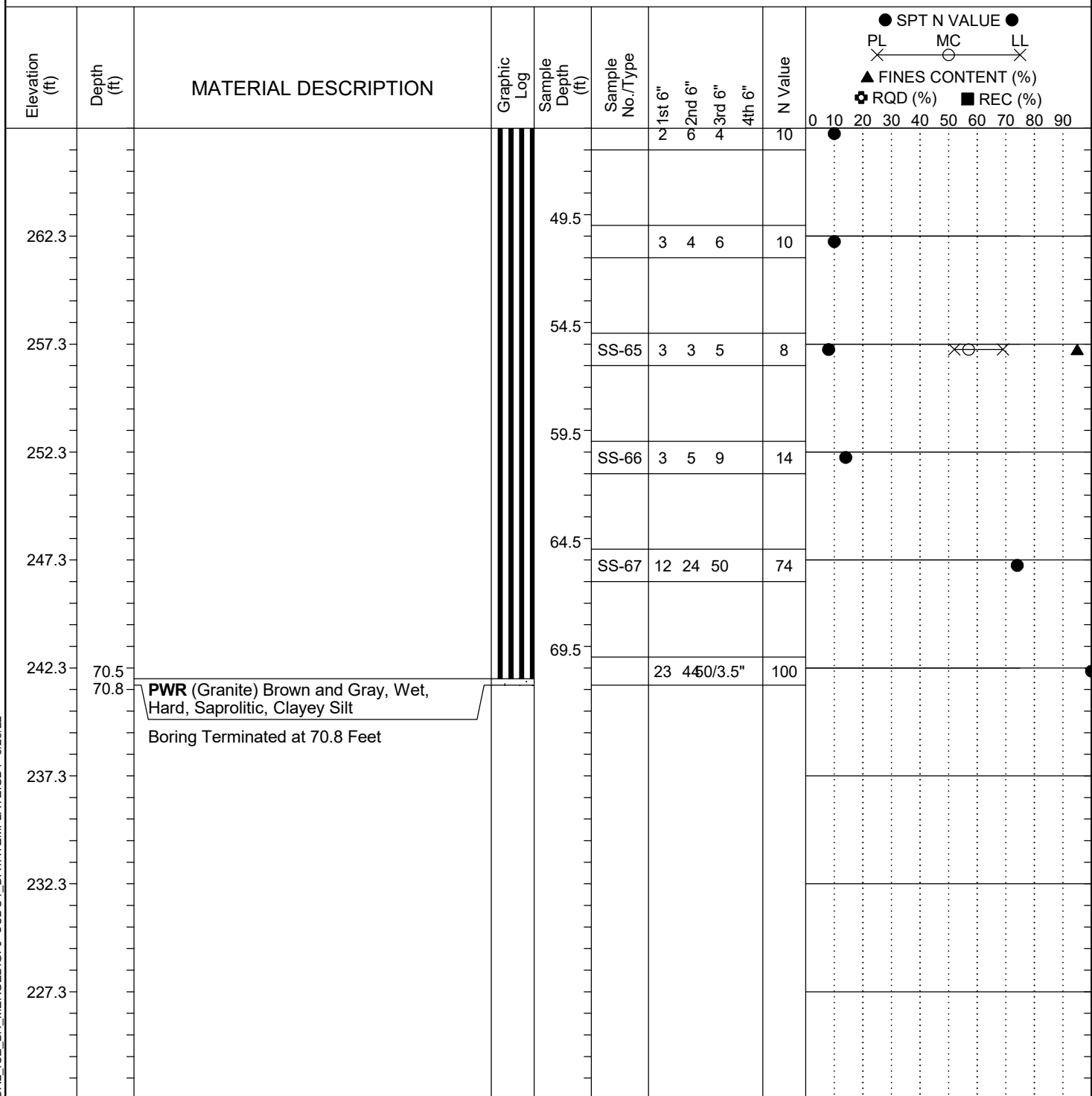


<b>Project ID:</b>	P039719	<b>County:</b>	Richland	<b>Boring No.:</b>	G-115
<b>Site Description:</b>	Carolina Crossroads Phase 2			<b>Route:</b>	Ramp
<b>Eng./Geo.:</b>	C. McIlroy	<b>Boring Location:</b>	398+00	<b>Offset:</b>	23 LT
<b>Elev.:</b>	312.3 ft	<b>Latitude:</b>	34.03960702	<b>Longitude:</b>	-81.09548966
<b>Total Depth:</b>	70.8 ft	<b>Soil Depth:</b>	70.8 ft	<b>Date Started:</b>	5/4/2022
<b>Core Depth:</b>	N/A ft	<b>Date Completed:</b>	5/4/2022		
<b>Bore Hole Diameter (in):</b>	2.25	<b>Sampler Configuration</b>		<b>Liner Required:</b>	Y (N)
<b>Drill Machine:</b>	D-50 #439	<b>Drill Method:</b>	RW	<b>Hammer Type:</b>	Automatic
<b>Core Size:</b>	N/A	<b>Driller:</b>	R. Cassell	<b>Energy Ratio:</b>	90.8%
		<b>Groundwater:</b>	TOB	<b>24HR</b>	21.9 ft



### LEGEND

SAMPLER TYPE		DRILLING METHOD	
SS - Split Spoon	NQ - Rock Core, 1-7/8"	HSA - Hollow Stem Auger	RW - Rotary Wash
UD - Undisturbed Sample	CU - Cuttings	CFA - Continuous Flight Augers	RC - Rock Core
AWG - Rock Core, 1-1/8"	CT - Continuous Tube	DC - Driving Casing	